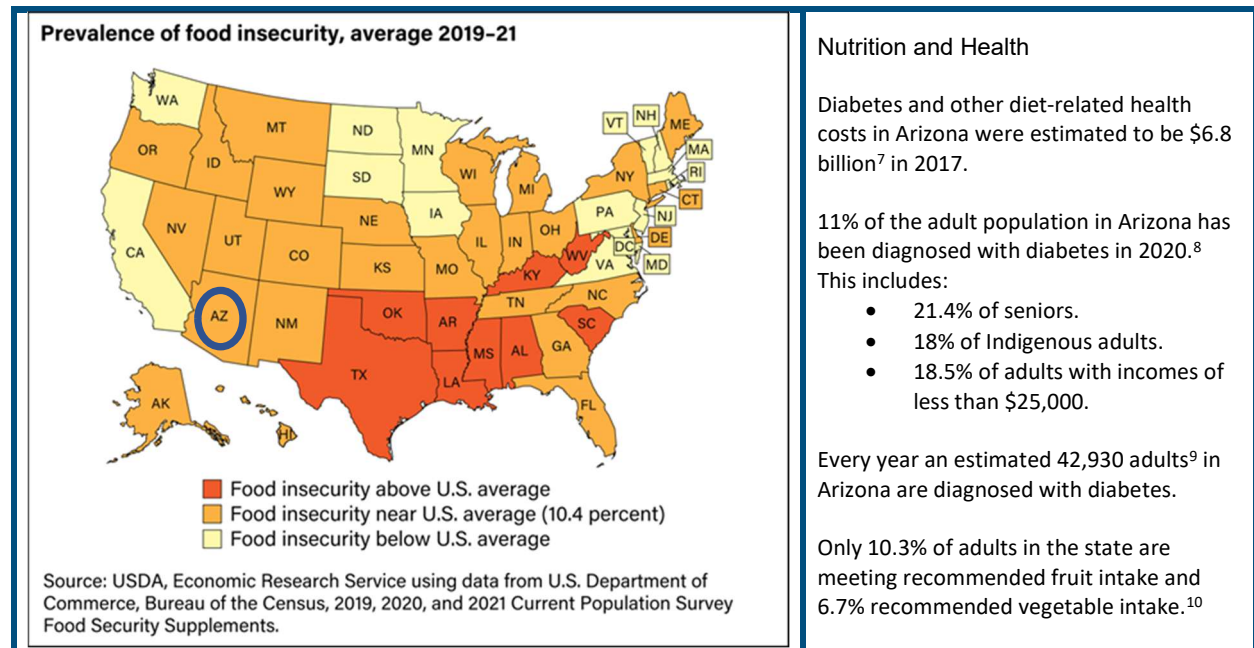


# Arizona

## A Hunger and Poverty Snapshot

Between 2019-2021:

- Food insecurity in Arizona averaged 10.10%.<sup>1</sup>
- Arizona’s food insecurity rate was slightly lower (0.3 percentage points) than the national average of 10.4%.<sup>2</sup>
- The official poverty rate (which does not account for income from safety-net and tax-support programs such as SNAP, EITC, and others) in the state averaged 11.2%.<sup>3</sup>
- But using the Supplemental Poverty Measure (which does include safety-net and tax-support income), the poverty rate falls to 9.0%.<sup>4</sup> In other words, these programs reduced the poverty rate in Arizona by 20% and the number of people living in poverty by 160,000.<sup>5</sup>
- SNAP, alone, lifted 204,000 people above the poverty line in Arizona, including 104,000 children, per year between 2013 and 2017, on average.<sup>6</sup>



### Why Bread for the World is Focused on the Farm Bill

The Farm bill is scheduled to be reauthorized in 2023. No legislation has more impact than a farm bill on the US food system and the nation’s ability to provide healthy food at affordable prices to everyone.

Bread for the World’s farm bill priorities include a focus on nutrition, equity, and sustainability. We believe Arizona has a lot to gain from a farm bill legislated with these priorities in mind.

Nutrition	Equity	Sustainability
<p>Bread for the World supports strengthening SNAP in Arizona.</p> <p>Not only is SNAP the flagship food security and nutrition program, it is indispensable to better health outcomes and economic prosperity.</p> <p>In 2021, <b>12% of Arizona residents</b> were helped by SNAP.<sup>11</sup></p> <ul style="list-style-type: none"> <li>Roughly 329,600 workers in Arizona live in households that participated in SNAP in 2021.<sup>12</sup></li> <li>SNAP helps 1 in 9 workers in Arizona put food on the table.<sup>13</sup></li> <li>69% of SNAP participants were in families with children, and 29% in families with members who are older adults or are disabled.<sup>14</sup></li> <li>77% of all SNAP-eligible people in Arizona participate in the program.<sup>15</sup></li> </ul>	<p>Bread for the World supports farm policies that promote a more equitable food system in Arizona.</p> <p>Arizona has more Native American farmers and ranchers (producers) than any other state. According to the most recent Census of Agriculture, 58% of producers in Arizona are Native American and occupy 77% of all farmland.<sup>16</sup></p> <ul style="list-style-type: none"> <li>And yet, Native American farms sold just under 2 percent of the state’s \$3.7 billion total in agricultural commodities.</li> <li>The majority are subsistence farms producing for families and neighbors.</li> <li>At 48.7 percent, Arizona has the largest percentage of female producers of any state, far above the national figure of 36.1 percent.</li> <li>In a state with more than 30 percent of the population Hispanic, only 4.5 percent of Arizona’s farmers were Hispanic.</li> </ul>	<p>Bread for the World is committed to eradicating food insecurity by building a more sustainable food system in Arizona.</p> <p>Reducing unnecessary food waste is one way to build a more sustainable food system.</p> <p>In 2019, 2.22 million tons<sup>17</sup> of surplus food in Arizona went to waste instead of reaching those who needed it, an amount equal to:</p> <ul style="list-style-type: none"> <li>3.6 billion meals unsold or uneaten.<sup>18</sup></li> <li>\$9.51 billion in lost sales.<sup>19</sup></li> <li>Annual CO2 emissions produced by 1,361,766 gasoline-powered cars.<sup>20,21</sup></li> </ul>

## Footnotes

<sup>1</sup> <https://www.ers.usda.gov/webdocs/publications/104656/err-309.pdf?v=9924.5>

<sup>2</sup> Bread for the World, based on USDA reporting, See Note 1.

<sup>3</sup> <https://www.census.gov/content/dam/Census/library/publications/2022/demo/p60-277.pdf>

<sup>4</sup> <https://www.census.gov/content/dam/Census/library/publications/2022/demo/p60-277.pdf>

<sup>5</sup> <https://www.census.gov/content/dam/Census/library/publications/2022/demo/p60-277.pdf>

<sup>6</sup> <https://www.cbpp.org/research/food-assistance/a-closer-look-at-who-benefits-from-snap-state-by-state-fact-sheets#Arizona>

<sup>7</sup> <https://diabetes.org/about-us/statistics/by-state>

<sup>8</sup> <https://www.americashealthrankings.org/explore/annual/measure/Diabetes/state/AZ>

<sup>9</sup> <https://diabetes.org/about-us/statistics/by-state>

<sup>10</sup> [https://www.cdc.gov/mmwr/volumes/71/wr/mm7101a1.htm?s\\_cid=mm7101a1\\_w#T1\\_down](https://www.cdc.gov/mmwr/volumes/71/wr/mm7101a1.htm?s_cid=mm7101a1_w#T1_down)

<sup>11</sup> <https://www.cbpp.org/research/food-assistance/a-closer-look-at-who-benefits-from-snap-state-by-state-fact-sheets#Arizona>

<sup>12</sup> <https://www.cbpp.org/snap-helps-low-wage-workers-in-every-state#Arizona>

<sup>13</sup> <https://www.cbpp.org/snap-helps-low-wage-workers-in-every-state#Arizona>

<sup>14</sup> <https://www.cbpp.org/research/food-assistance/a-closer-look-at-who-benefits-from-snap-state-by-state-fact-sheets#Arizona>

<sup>15</sup> <https://www.fns.usda.gov/usamap>

<sup>16</sup> [https://www.nass.usda.gov/Publications/AgCensus/2017/Online\\_Resources/County\\_Profiles/Arizona/index.php](https://www.nass.usda.gov/Publications/AgCensus/2017/Online_Resources/County_Profiles/Arizona/index.php)

<sup>17</sup> [https://insights-engine.refed.org/food-waste-monitor?break\\_by=food\\_type&indicator=tons-surplus&view=detail&year=2019](https://insights-engine.refed.org/food-waste-monitor?break_by=food_type&indicator=tons-surplus&view=detail&year=2019)

<sup>18</sup> [https://insights-engine.refed.org/food-waste-monitor?break\\_by=food\\_type&indicator=tons-surplus&view=detail&year=2019](https://insights-engine.refed.org/food-waste-monitor?break_by=food_type&indicator=tons-surplus&view=detail&year=2019)

<sup>19</sup> [https://insights-engine.refed.org/food-waste-monitor?break\\_by=food\\_type&indicator=tons-surplus&view=detail&year=2019](https://insights-engine.refed.org/food-waste-monitor?break_by=food_type&indicator=tons-surplus&view=detail&year=2019)

<sup>20</sup> [https://insights-engine.refed.org/food-waste-monitor?break\\_by=food\\_type&indicator=tons-surplus&view=detail&year=2019](https://insights-engine.refed.org/food-waste-monitor?break_by=food_type&indicator=tons-surplus&view=detail&year=2019)

<sup>21</sup> <https://www.epa.gov/energy/greenhouse-gas-equivalencies-calculator>