

university lutheran church



lutheran campus ministry

March 2013



Palm Sunday

Sunday, March 24, 10:30 am

Holy Week Worship

Maundy Thursday, March 28, 7:30 pm

Good Friday, March 29, 7:30 pm

Easter Sunday

March 31

Outdoor Sunrise Service, 6 am

Easter Brunch

Festive Easter Worship, 10:30am

(no student dinner Easter Sunday)

Mid Week Lenten Services, Wednesdays at 6:30 pm

A contemplative service as we gather around the cross

March 6: "Migration as Seeking Something Better"

March 13: "Migration as Alienating"

March 20: "Migration as Anxious Waiting"

March 27: "Migration as Experiencing Loss but Having Hope"



Pastor's Notes

Gary N. McCluskey, Pastor

As I write these notes the dust of Ash Wednesday is only hours removed from my forehead. Lent has just begun. There is something special about Lent. I actually find its more serious tone appealing. In many ways it is refreshing. I don't think I am masochistic or pessimistic in my appreciation of Lent. I think the appeal lies in its honesty. I am *not* who I want to be. More to the point, I am not who *God* created me to be. And I will not be whom God or I want me to be. Therein lies the honest truth of Lent.

Over the years I have discovered I am not alone in this appreciation and understanding of Lent. Easily I picture several former students who expressed their youthful enthusiasm for Lent, including some of the more somber and traditional hymns. In a world of much hyperbole about products, people, programs, and life, indeed such honesty is refreshing. Lent promises us nothing. We know it will end. And we know after Lent's conclusion there is light, joy, and hope. Resurrection, new life will come!

There is, however, one very nice thing about Lent. It is that we who two thousand years after Jesus know that Resurrection *has* taken place. Regardless of the darkness of Lent, we are aware there is yet light. This is important to remember not only during Lent but throughout life. Many times life itself mirrors Lent. At times life is much too serious, even sad. Too often even the followers of Jesus see the light of Resurrection as simply something for later; something for some end time. It is more like the proverbial "light at the end of the tunnel". We forget that Jesus has been raised. We forget the light of Resurrection *is* with us. If we think of Resurrection and new life as simply for some end time of our life, how much we miss now as we go through life! How much hope we can miss now as we may struggle. If Jesus can overcome death, can Jesus not also then overcome illness, suffering, sorrow, divorce, loss, shame or failure? If Jesus can provide hope for some time after life, can Jesus not bring hope and light to dark places now?

Trudge on through Lent's migration. Walk onward along the path of honesty. Journey as one who knows there is not only light to be found ahead, but there is light guiding our way now. Hope is not only for some distant future, it is part of life and faith now. Lent is such excellent preparation for Easter. Lent is such excellent preparation for life.

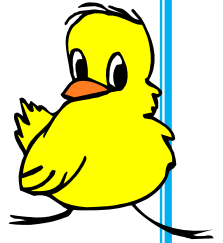
Dates for your calendar:

| | | |
|---|----------|---|
| Saturday, March 2, March 18—March 22 | 8:00 am | Citrus Gleaning ASU Spring Break |
| Saturday, March 23 | 8:00 am | Workday |
| Saturday, April 20 Wednesday, May 8 | 5:30 pm | Dinner and Concert Night, Graduation Banquet—All are invited!! |
| Sunday, May 19 | 11:45 am | Congregational Meeting, , |



Buck-a-Chick

Again we are participating in the ELCA World Hunger Campaign Buck-a-Chick program. For \$1.00 you may color a chick and tack in on the wall of the Campus Center. All proceeds go directly to fight world hunger. You may do one or several. Feel free to color outside the lines! Feeling really creative? Create and draw your own chick. You may put your name on it if you wish. Chicks and the basket for donations are on the pool table in the Campus Center. Thank you!



Don't fowl out, color yours today!



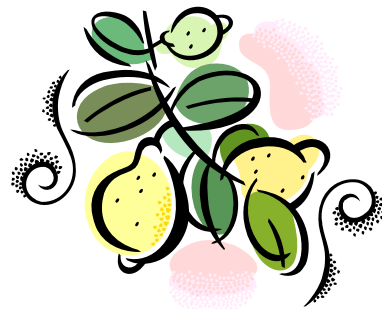
Easter Decorations

As always, to help us celebrate the joy of the Resurrection, we anticipate decorating the sanctuary with flowers for Easter Sunday. You may contribute to the flowers by filling out and returning a bulletin insert during March or calling or e-mailing (info@ulctempe.org) the church office. Please designate if you would like to honor or memorialize a loved one with your gift. Gifts of any amount are welcome. Envelopes marked "Flowers" will be in the chair racks. Thank you!!



Work Day, March 23

Saturday, March 23, we'll gather about 8 a.m. to prepare our facilities for Palm Sunday--so bring your work gloves, rubber gloves and enthusiasm! Palm fronds need to be placed in the sanctuary even as more routine matters such as light bulb replacement, window washing, and general neatening are addressed.



Gleaning, Saturday, March 2

We meet at the church parking lot, March 2 at 8 am to glean citrus. Citrus will be given to the local food bank. They make juice, put some citrus in food bags, and sell excess, including the decorative sour oranges, to companies making jam. Gloves for citrus pickers would be helpful.

Cartridges

We continue to receive cartridges to sell for recycling. We receive ink jet and laser cartridges only. Sorry, no Epson products. The container is on the floor near the pop machine. Cell phones are also received and can be placed in the container on top of the pop machine.

Student of the Month :

Julie Gerrish

What's your major? Elementary Education

Why did you choose it? I picked it because I like working with kids and I feel like I can impact the future in a positive way. And I'm kind of very childish myself.

What is your hometown? Ahwatukee. It's a village. It's the largest village in the world supposedly.

Hobbies? I like to sing, I really like music. I have a bad habit of looking on youtube. I really like musicals! My favorite musical is the Sound of Music.

Where do you see yourself in ten years? I guess I'll be teaching. But it's really hard to see in ten years. I would want to travel and teach in other countries.

How did you first learn about LCM? My sister Heidi goes to the U of A LCM. So I wanted to do it here. Then I was a volunteer at Tirosh which some of the LCM people do.

What do you like about LCM? Everyone is really welcoming and nice, there's free food, and I really like the services during the week.

Favorite thing that LCM does ? Wednesday services, and sometimes when we do events on weekends, and Oh! I really like the San Diego trip.

What brings you back to LCM? The people bring me back because they're all so nice and welcoming. It's really easy to come back. No one really pressures you to come back. They're just really nice. They just want you to come.

What would you say to Freshman who come to us? I would tell them that everyone is welcome at LCM. Everyone at LCM is very nice and fun.



The Methodists are Coming! (And LCM is Going....)

Wednesday, April 3 we will NOT have our Wednesday service here. We will instead visit the Methodist Campus Ministry on University Drive. April 10 we will host the Methodist Campus Ministry here. Come, visit our northern neighbors and denominational partners! Come, greet them and give them good ol' ULC/LCM hospitality when they come here!!

Greetings to you from your Campus Ministry Associate!

As many of you probably know, my time as your ministry associate concludes this May. It has been a pleasure serving this ministry. I also plan to remain as involved as possible while I finish up my dissertation at ASU in Fall of 2013.

As my time here approaches its end, I have been amazed by the commitment of our ministry to fellowship, dialogue, and service with our fellow campus ministries at ASU of different denominations, backgrounds, and faiths. This year our ministry has taken part in three major events organized through ASU's Council of Religious Advisors (CORA). These events have strengthened our connections with other ministries as well as shown our students how people of different faith perspectives can truly serve God together.

In January, we attended a Shared Sabbath event at the Latter Day Saints Institute at ASU. There we shared in food, singing, and discussions around how each of our ministries celebrates our Sabbath day. It was a great way to connect in a safe environment, and also enjoy delicious hot cocoa.

On a Saturday this February, our students got up early (8am) and headed on over to Hudson Park in Tempe. There we worked with other ministries to clean up the cigarette butts, trash, and many other pieces of litter in the park. Around 11am, all our ministries set up different booths for a carnival in the park. The guests of our carnival were persons with serious mental and physical challenges from The Center for Habilitation. Our students led a crafts table and a carnival booth where participants went fishing for prizes. I couldn't decide which I enjoyed more: The smiles on the participants' faces or on the students' faces.

On a Tuesday morning/afternoon this February, Pastor Gary and I (with students helping here and there) set up a table in front of the Hayden Library for the I <3 (Heart) Faith Fair. There we joined other ministries tabling; in fact, we shared our table with the Hillel (Jewish) ministry. Members of the Council of Religious Advisors handed out pizza from Papa John's to students passing by and encouraged them to stop by any of the ministry tables for free water and to learn about each ministry. While I enjoyed meeting new students and seeing our students who came to say hi, I must say I really enjoyed my conversation with Rabbi Lee from Hillel. It is amazing how much we have in common with each other.

As we were sitting at the Faith Fair, a street proselytizer began shouting about God's condemnation of the world. Two individuals from another Christian campus ministry then stood up and shouted, "Jesus Loves You". The proselytizer then shouted "No he doesn't". It is sad to see how distorted Gospels are being evangelized in this world. I turned to the Rabbi and said, "Should we say something?" He reminded me that we *were* saying something. The faith fair was showing the students on campus that God (and his many expressions) is much more than a man standing on a stool screaming messages of condemnation.

Witnessing is an important aspect of our faith. I have come to learn over my years at LCM that sometimes the subtle witness (like we learn on Ash Wednesday) is the best approach. Although each time I hear proselytizers on campus screaming their proclamations, I'm tempted to go out and buy my own stool.



ELCA World Hunger

This season of Lent is a good time to reflect on how we may use our lives of abundance in giving to others. Our contributions to the World Hunger appeal are used both internationally and nationally on comprehensive programs of relief, development and advocacy. We partner with companions around the globe, serving with compassion people who are the most vulnerable, responding to Christ's call to "Go and do likewise".

Over 90% of every dollar donated to ELCA World Hunger directly supports programmatic work; international relief and development gets 71%; domestic relief and development receives 8%; hunger education gets 5%; and advocacy gets 7.5%. Only 8.5% goes for administration and fundraising. (The Better Business Bureau, in evaluating charitable appeals, considers that any acceptable charity should spend at least 65% on program expenses--and *no more than 35% on fund raising.*)

Give generously, knowing your charitable gift is well-spent!

Open Forum

(Meets Sundays 9:15am-10:15am in Campus Center Library)

Sunday, March 3: "**The Church *in* England**" presented by our student Bekki Elliott, a native of the London area.

Sunday, March 10: "**Countering Pharaoh's Production-Consumption Society Today**" a DVD series from Dr. Walter Brueggemann
Part I "**The Way Out**"

Sunday, March 17: "Part II "**The Decalogue**"

Sunday, March 24: "Part III "**Countering Caesar**"

Sunday, March 31 NO Forum...Easter Sunday



Like to Read?

If you order books or any products from Amazon.com, you can do so at no extra charge to you and the church can receive a percentage of your purchases. Simply go to www.ulctempe.org, click on "Donate". When that page comes up, click on the Amazon icon on the left. Then order as you normally do. Once you order in this way, Amazon should recognize you and your account every time you order through our web site. Thank you!! Tell your friends and neighbors!!

I've got a new Prayer Pal. Now what?

"Before they call I will answer;

While they are still speaking I will hear."

Isaiah 65:24



Many members of our community exchanged Prayer Pal names on February 24. Thank you for contributing to our eleventh year of this endeavor.

We especially welcome those who are new to the Prayer Pal exchange. You might be wondering, "OK, I have a name on a card, now what?"

If you don't know the person whose name you have, look on the photo boards just inside the campus center doors. If you don't find your person among the members' photos, check the student photo board. Still no luck? Ask Pastor Gary; he knows everybody!

Praying for someone should not make you feel uncomfortable. Whisper a silent prayer whenever you think of the person. Or choose a certain time each day to lift your Pal in prayer. Associating your prayer with something you do every day will help you remember to pray regularly. Your prayers don't need to be formal or take a huge chunk of time. (I pray for certain people every day when I'm just waking up, and others while I'm in the shower.)

If your Prayer Pal's birthday is listed in the newsletter you could send an anonymous greeting. Or, a simple "Thinking of You" card out of the blue might just make his or her day.

Pray in whatever way you are most comfortable. I'm convinced God doesn't care how, where or when we pray, as long as we do it with sincerity.

Thanks for participating. If you would like to pray with us, everyone is welcome on Wednesdays at 5:30 pm in the sanctuary, just before the mid-week service.

Kim Savage

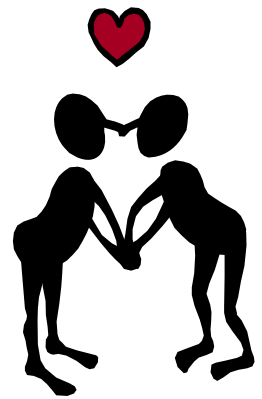
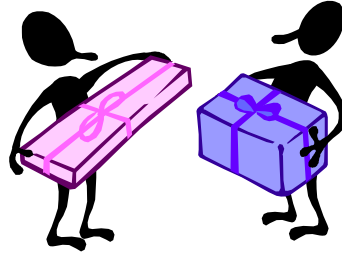
Women's Bible Study—All women are invited to join in our thoughtful discussions and warm fellowship.

March 14 - at Sarah Salinas's
April 4 - at Ann Rispoli's
May- to be determined



HAPPY BIRTHDAY TO EVERYONE IN OUR COMMUNITY BORN IN MARCH!

- 3/01 Jon Yocky
- 3/08 Max Hindes is 3 today
- 3/08 Carl Mangold
- 3/08 Aiko Mancini
- 3/11 Eric Aiken
- 3/17 Lynn Becker
- 3/23 Colleen Sherod
- 3/24 Luke Johnson
- 3/26 Brian Becker
- 3/27 PJ Hudak
- 3/29 Janelle Knowlton
- 3/30 Maddie Shaner



WEDDING ANNIVERSARY WISHES TO

- 3/07 Carolyn Johanssen and Bob Foley celebrating 9 years
- 3/17 Nicole and Eric Nash celebrating 6 years
- 3/19 Aiko and Brian Mancini celebrating 2 years

Thanks...

- ...to **Dave Hull** for cutting/preparing the 8' cross for our Mid-Week Lenten services
- ...to **Eric & Loni Lehnhardt** and **John Barton** for hosting our Campus Ministry candidate, **Alicia Danielson**, at their home
- ... to **Lynn** and **Art Becker** for their gardening labor on our flower beds.
- ...to the **Loomis Family** for sharing their portable play yard used for the mosquito net project.

Thanks to all of us for making the 60th Anniversary Picnic Potluck a rousing success. We donated \$585.00 for the mosquito net project. That's 58 1/2 nets towards our 60 nets goal. Donations will be accepted through March.



The picnic food was varied and yummy-luscious with a nice nod to the 50's jello salads! The low temps and wind forced us to be inside however, they did not affect our spirit in the least!

March 2013

| Sun | Mon | Tue | Wed | Thu | Fri | Sat |
|--|---------------------------------------|-----------|--|--|---|---|
| | | | | | <i>1</i> <i>LCM Laser Tag</i> <i>With local youth</i> <i>group</i> | <i>2</i> <i>Sam Citrus</i> <i>Gleaning</i> |
| <i>3</i> 9:15am Open Forum 10:30am Worship 7pm Softball Ki- wanis Field | <i>4</i> | <i>5</i> | <i>6</i> 5pm Bible Study 5:30pm Student Dinner 6:30pm Worship 7:30pm Choir Practice | <i>7</i> <i>LCM Broga</i> <i>(Breakfast and</i> <i>Yoga) 8am</i> <i>12pm (noon) Book</i> <i>Club</i> | <i>8</i> | <i>9</i> |
| <i>10</i> 9:15am Open Forum 10:30am Worship 7pm Softball ASU Spring Break Begins | <i>11</i> | <i>12</i> | <i>13</i> 5pm Bible Study 5:30pm Student Dinner 6:30pm Worship 7:30pm Choir Practice | <i>14</i> <i>LCM Broga</i> <i>(Breakfast and</i> <i>Yoga) 8am</i> <i>7pm Women's</i> <i>Bible Study at</i> <i>Sarah Saitmas'</i> | <i>15</i> | <i>16</i> |
| <i>17</i> 9:15am Open Forum 10:30am Worship 8pm Softball Ki- wanis Field | <i>18</i> ASU Spring Break ends | <i>19</i> | <i>20</i> 5pm Bible Study 5:30pm Student Dinner 6:30pm Worship 7:30pm Choir Practice | <i>21</i> <i>LCM Broga</i> <i>(Breakfast and</i> <i>Yoga) 8am</i> | <i>22</i> | <i>23</i> <i>Sam Work Day</i> <i>LCM goes to the</i> <i>Renaissance Fair</i> <i>6pm</i> |
| <i>24</i> 9:15am Open Forum 10:30am Palm Sunday Procession of the Palms Wor- ship 6pm Softball | <i>25</i> <i>Holy Week</i> | <i>26</i> | <i>27</i> 5pm Bible Study 5:30pm Student Dinner 6:30pm Worship 7:30pm Choir Practice | <i>28</i> <i>LCM Broga</i> <i>(Breakfast and</i> <i>Yoga) 8am</i> <i>Maunday</i> <i>Thursday 7:30pm</i> | <i>29</i> <i>Good Friday</i> <i>7:30pm</i> | <i>30</i> |
| <i>31</i> <i>Easter Sunrise ser-</i> <i>vice (outdoor) 6am</i> <i>Easter Breakfast</i> <i>Festival of Resurrec-</i> <i>tion 10:30am</i> | | | | | | |